



**WARNING:** make sure the electrical power to the motor is switched off when working manually on the windlass. Carefully remove the chain or rope from the gypsy or the rope from the drum.

Quick® windlasses are manufactured with materials resistant to marine environments. In any case, any salt deposits on the outside must be removed periodically to avoid corrosion and damage to the equipment. The parts where salt may have built up should be washed thoroughly with fresh water.

Once a year, the drum and the gypsy are to be taken apart as follows:

### DRUM VERSION

Use the handle (1 or 2) to loosen the bush (3); pull off the drum (4) and the top clutch cone (6); loosen the fixing screws (9) of the rope/chain stripper and remove it. Pull off the gypsy (7).

### NO-DRUM VERSION

Use the handle (1 or 2) to remove the gypsy cover (5); remove the top clutch cone (6); loosen the fixing screws (9) of the rope/chain stripper and remove it and pull off the gypsy (7).

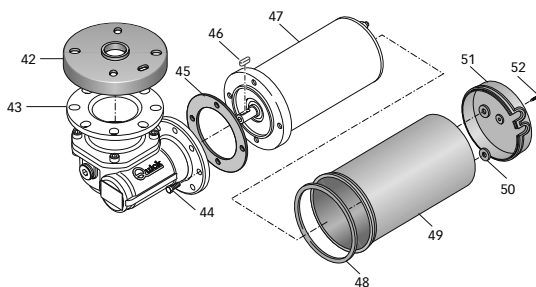
Clean all the parts removed to avoid corrosion, and grease the shaft thread (16, 17, 18 or 19) and the gypsy (7) where the clutch cones (6 and 8) rest (use grease suitable for marine environment).

Remove any oxide deposits from the terminals of the electric motor and the contactor unit; grease them.

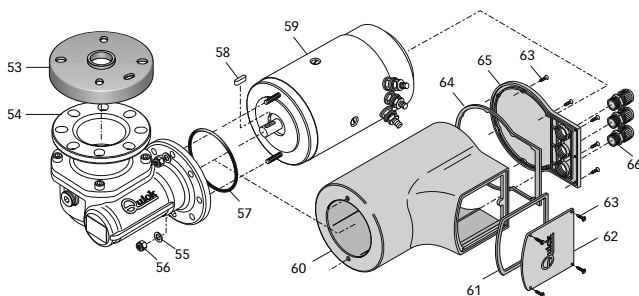
POS.	DESCRIPTION	CODE
1	Bent windlass lever 700-1000W	MSH0000000R1
2	Straight windlass lever - nylon 300-500W	PVLVSDN000000
3	Drum bush DP2 chromed	SGMSD0400000
4	Drum - 800W	ZSPMSE0800R3
5	Gypsy cover	MSGB07GX0000
6	Top clutch cone	MSF07G000000
7	Gypsy" 5/16" complete DP2	ZSBDP20516R0
8	Bottom clutch cone	MSF08ASCN000
9	Screw 5*45	MBV0545MXCE0
10	Spring washer	MBR254010X00
11	Oil seal	PGPRL2547700
12	Internal circlip	MBAN4717Y000
13	External circlip	MBAE2520Y000
14	Bearing 6005	MBJ600500000
15	Oil seal	PGPRL2540700
16	Shaft DP2 700/1000W	MSASDP20L0R0
17	Shaft DP2 D 700/1000W	MSASDP2DL0R0
18	Shaft DP2 300/500W	MSASDP20S0R0
19	Shaft DP2 D 300/500W	MSASDP2DS0R0
20	Key	MBH0807080X0
21	Key	MBH0606050X0
22	Key	MBH0606025X0
23	Chain guide cover DP2	-
24	Plastic chain pipe series DP2	PDNCDP20000
25	Screw 3,9*25	MBV03925AXCC
26	Spring for pressure lever	MMTND08ASC00
27	Pressure lever DP2	PDLVTDDP2N00
28	Cylindrical pin	MBSC04040A00
29	Screw	MBV0416MXCEB
30	Screw	MBV0440MXCE0
31	Screw	MBV0430MXVEP
32	Plastic chain pipe series DP2	PDPS0DP20R01
33	Screw	MBV0814MXTSC
34	Stainless steel cover base serie DP2	MSGB0DP2X000
35	Plastic cover insert DP2	PDNC0DP20000
36	Gasket/ DP2 - shaped jig	PGB5DP200000
37	Sensor	KNREEDCL0000
38A	Stud 8*060 Ø8	MBP080608X00
38B	Stud 8*080 Ø8	MBP080808X00
39	Washer	MBR08X000000
40	Grower	MBR08XDE0000
41	Nut	MBD08MXEN000



42	Gearbox flange gasket TOP TG40	PGFLRDTG4000	55	Washer	MBR061815X00
43A	Gearbox - Quick TG40 500W	SLMR05TG4000	56	Self locking nut	MBD06MXET000
43B	Gearbox - Quick TG40 500W HS	SLMR05TG40HS	57	O-ring	PGR023000000
44	Screw	MBV0516MXE00	58	Key	MBH050515F00
45	Geared motor seal	PGBMR0400000	59A	Electric motor 700w 12v	EMF071200000
46	Key	MBH040415F00	59B	Electric motor 1000w 12v	EMF101200000
47A	Electric motor 300W 12V	EMF031200000	59C	Electric motor 700w 24v	EMF072400000
47B	Electric motor 500W 12V	EMF051200000	59D	Electric motor 1000w 24v	EMF102400000
47C	Electric motor 500W 24V	EMF052400000	60A	Motor casing watertight 700w	PCCCPM070000
48	Flange gasket	PGGPMFN04000	60B	Motor casing watertight 1000w	PCCCPM100000
49	Motor casing watertight 300/500W	PCCCPM040000	61	Grommet 700/1000w	PCGPMMR00000
50	Poles gasket electric motor	PGGPMPM04000	62	Terminal board cover 700/1000w	PCCPPMMR0000
51	Bottom protec cover electric motor	PCCPPMFN0400	63	Screw	MBV02213AXSC
52	Screw	MBV03916AXCC	64	Bottom gasket 700/1000w	PGGPMFN00000
53	Gearbox flange gasket TOP TG50	PGFLRDTG50000	65	Bottom protec cover 700/1000w	PCCPPMFN0000
54	Gearbox - Quick TG50 1000W	SLMR10TG5000	66	Cable outlet	PPM20B000000



MOTORGEARBOX 300/500W



MOTORGEARBOX 700/1000W