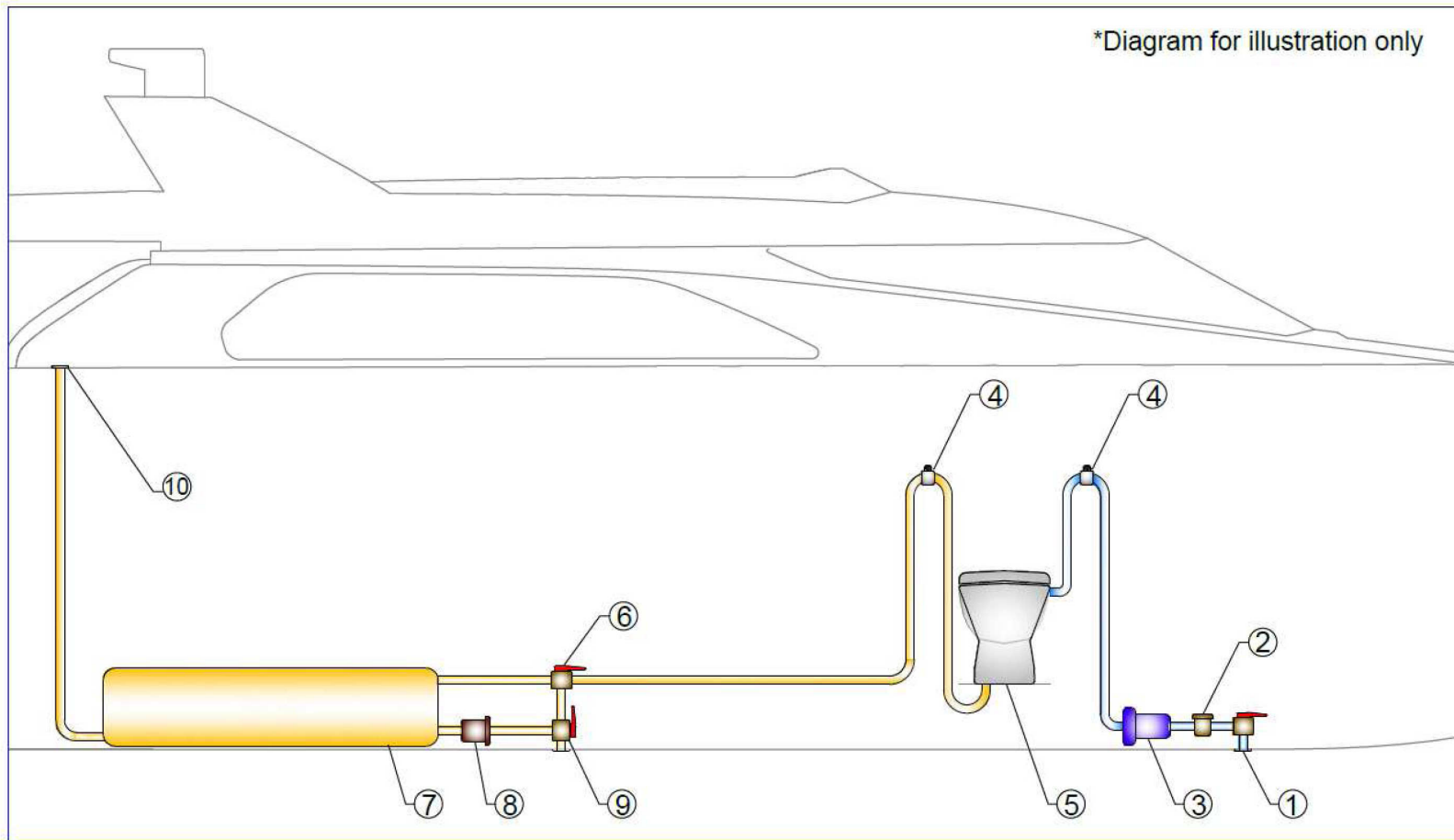


# SINGLE SYSTEM

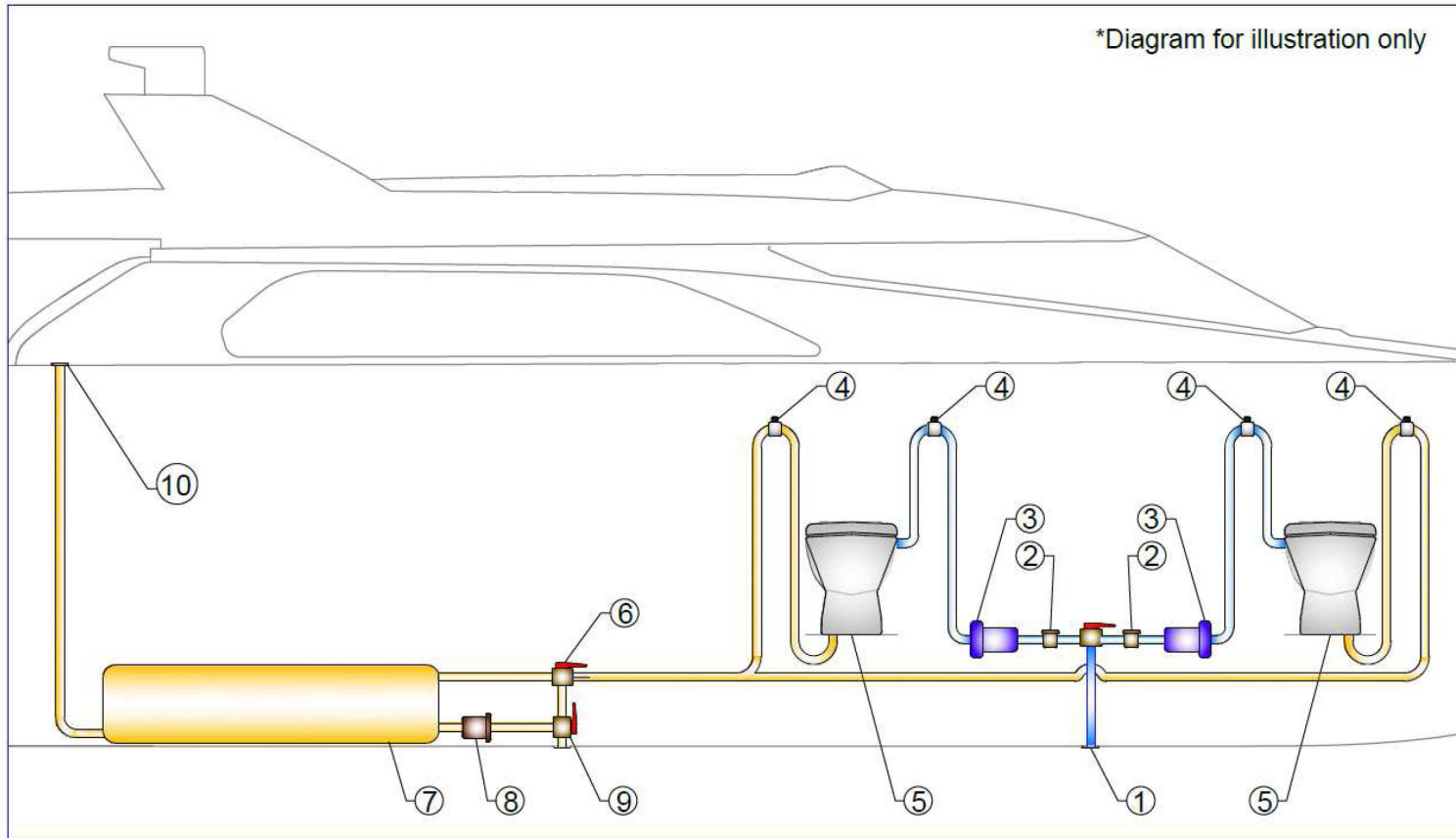
## HYDRO VACUUM TOILET INSTALLATION



1	RAW WATER INTAKE – ball valve seacock	6	Y SELECTION VALVE
2	RAW WATER STRAINER	7	HOLDING TANK with
3	RAW WATER PUMP	8	HOLDING TANK DISCHARGE PUMP
4	VENTILATION VALVE – siphon break	9	BLACK WATER OUTLET - HULL
5	MACERATOR TOILET	10	BLACK WATER OUTLET - DECK

# MULTIPLE SINGLE SYSTEM

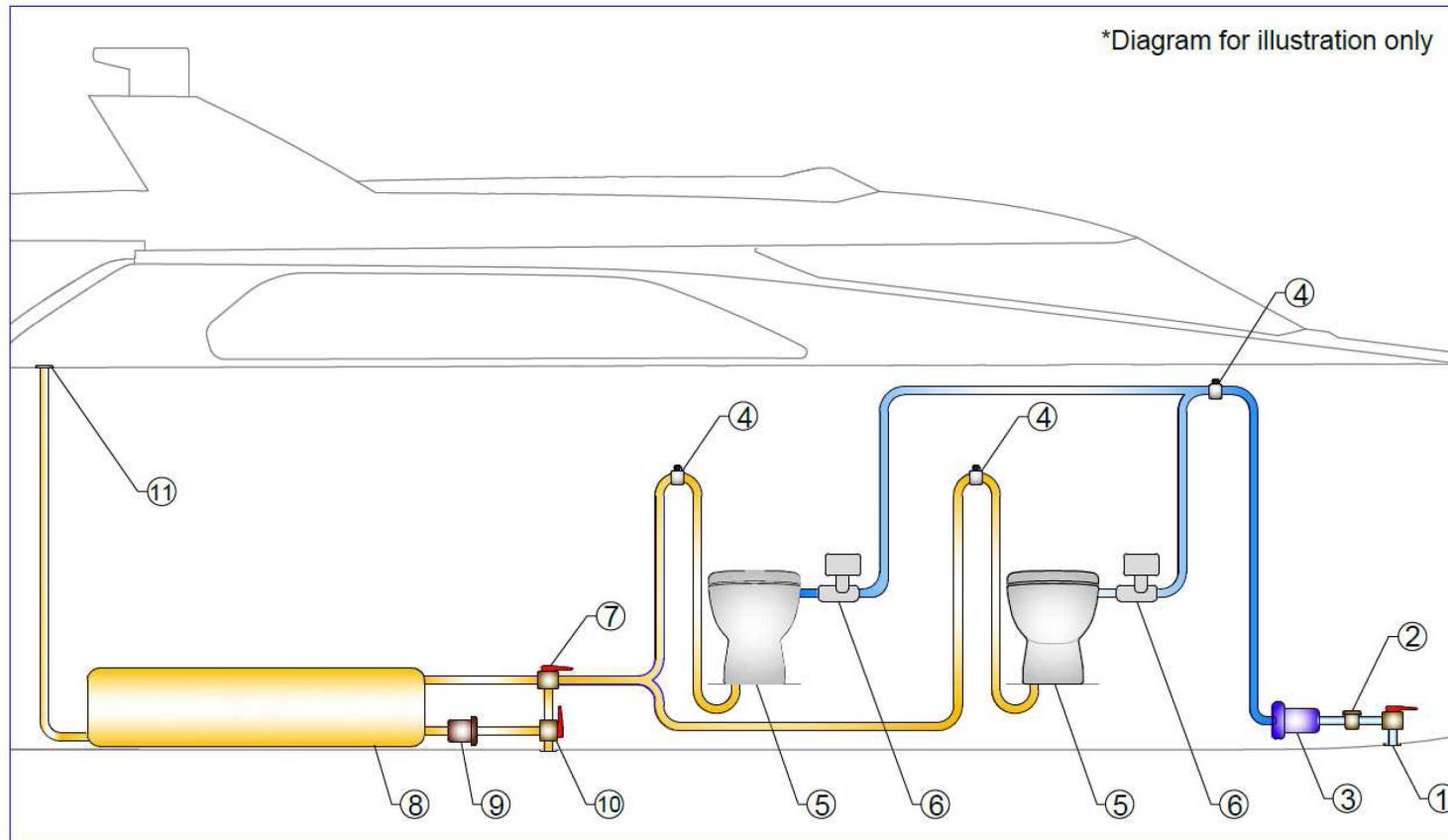
## HYDRO VACUUM TOILET INSTALLATION



1	RAW WATER INTAKE – ball valve seacock	6	Y SELECTION VALVE
2	RAW WATER STRAINER	7	HOLDING TANK with
3	A RAW WATER PUMP	8	HOLDING TANK DISCHARGE PUMP
4	VENTILATION VALVE – siphon break	9	BLACK WATER OUTLET - HULL
5	MACERATOR TOILET	10	BLACK WATER OUTLET - DECK

# MULTIPLE SINGLE SYSTEM

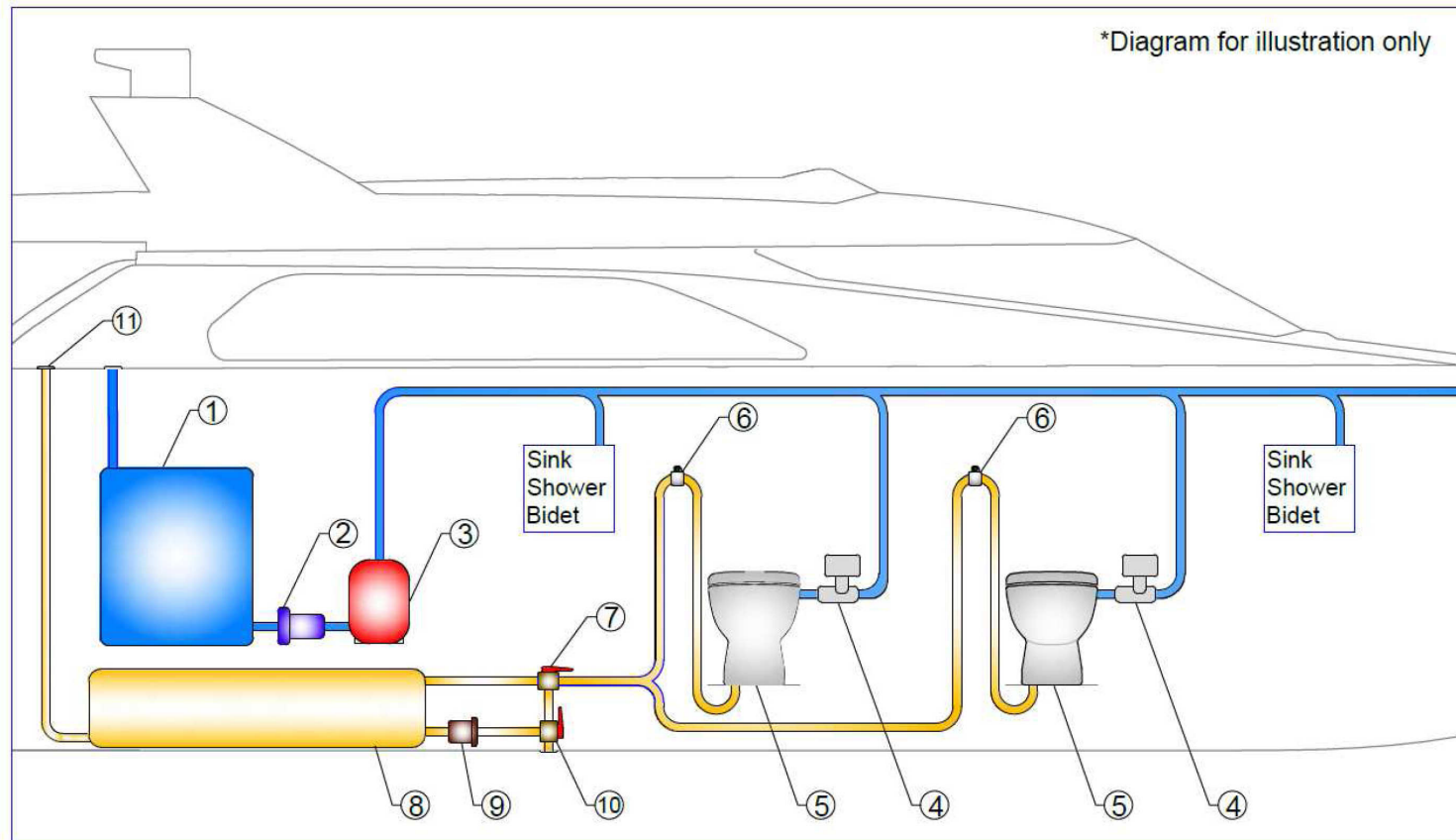
## HYDRO VACUUM TOILETS INSTALLATION



1	RAW WATER INTAKE – ball valve seacock	6	SOLENOID
2	RAW WATER STRAINER	7	Y SELECTION VALVE
3	RAW WATER PUMP	8	HOLDING TANK
4	VENTILATION VALVE – siphon break	9	HOLDING TANK DISCHARGE PUMP
5	MACERATOR TOILET	10	BLACK WATER OUTLET - HULL
		11	BLACK WATER OUTLET - DECK

# CENTRALIZED FRESH WATER SYSTEM

## HYDRO VACUUM TOILET INSTALLATION



<b>1</b>	<b>FRESH WATER TANK</b>	<b>6</b>	<b>VENTILATION VALVE</b>
<b>2</b>	<b>FRESH WATER PUMP</b>	<b>7</b>	<b>Y SELECTION VALVE</b>
<b>3</b>	<b>ACCUMULATOR</b>	<b>8</b>	<b>HOLDING TANK with sensor</b>
<b>4</b>	<b>SOLENOID</b>	<b>9</b>	<b>HOLDING TANK DISCHARGE PUMP</b>
<b>5</b>	<b>MACERATOR TOILET</b>	<b>10</b>	<b>BLACK WATER OUTLET - HULL</b>
		<b>11</b>	<b>BLACK WATER OUTLET - DECK</b>