

PLEASE CAREFULLY READ THIS OPERATING MANUAL



200 LB
HAULER

300 LB
HAULER

INSTALLATION AND OPERATING INSTRUCTIONS

Please read and save these instructions. Read carefully before attempting to assemble, install, operate or maintain the product described. Protect yourself and others by observing all safety information. Failure to comply with instructions could result in personal injury and/or property damage! Retain instructions for future reference.

Unpacking - When unpacking, inspect carefully for any damage that may have occurred during transit. Make sure any loose fittings, bolts, etc., are tightened before putting unit into service.

GENERAL SAFETY INFORMATION - Throughout this manual potential safety hazards will be noted with the following terms. Please read and understand these terms before operating the product.

WARNING

Warning indicates a potentially hazardous situation that **COULD** cause death or serious injury if the warning is ignored.

CAUTION

Caution indicates a potentially hazardous situation that **MAY** cause minor or moderate injury if the warning is ignored. It may also mean hazard that will only cause damage to property. This notation is also used to alert you against unsafe practices.

SAFETY ISSUES

The Line Hauler is a powerful piece of machinery. It is important that you understand the basics of its operation and specifications so that when you need to use it, you can use it with confidence and safety. In this manual is a list of components of your Line Hauler and their use. You should practice using your Line Hauler before you head to the water.

WARNING

USE CAUTION - KEEP FINGERS AWAY FROM MOVING PARTS

- Do **NOT** exceed rated capacity shown in this table.
- Intermittent use only. Allow Line Hauler to cool between uses.
- Do **NOT** use Line Hauler to pull or move people in any way.
- Failure to heed these warnings may result in personal injury and/or property damage.
- Use gloves to protect hands when handling the rope.
- Line Hauler is designed and made for intermittent use and should not be used in constant duty applications.

ASSEMBLY & MOUNTING

1. Drill 4 holes where you want to mount your Line Hauler. Use the mount as a template and attach with supplied mounting hardware (M8x50mm) and mounting plate, part #42.
2. The bearing (part #41) has been pre-installed on the mounting plate (DO NOT UNDO OR REMOVE). Fit the mounting plate cover, part #40 over the mounting plate which has now been mounted. Lock the cover in place with the two locking pins, part #25. Pull the spring locking pin back, part #53 on the main frame and place over the bearing on the base plate. Release pin to lock the frame in.
3. Insert the arm into the frame, lock it in place with locking pin part #17. Fit the swivel pulley part #33 onto the arm and lock it in place.
4. Fit and connect the socket to the battery using your own battery cables. (+ to +, - to -). Insert power plug from Line Hauler into socket.
5. Please get familiar with the operation of this Line Hauler before fitting the rope. Incorrect usage could damage the product and void the warranty. Feed rope on as per guide below.
6. Make sure the rope is secured on the main wheel part #51 before starting.
7. Your Line Hauler is now ready for operation.

SWITCH FUNCTIONS:

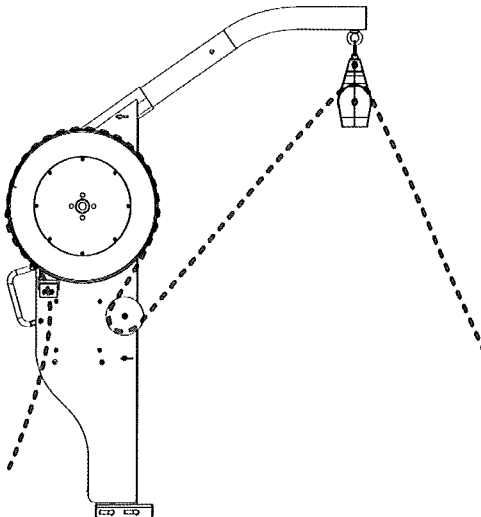
Switch in **down** position (automatic): The Line Hauler will start pulling the rope in automatically.

Switch in up position: This is the reverse function and not normally required.

Use with caution and only activate switch momentarily.

8. Storage:
 - Clamp the swivel pulley onto the arm
 - Remove locking pin, part #17 to take the arm out.
 - Hang the arm on the frame and lock it in place with locking pin part #23.
 - Pull the spring locking pin back, part #53 to release frame from the base plate.

ROPE GUIDE



CAUTION

Batteries contain gases which are flammable and explosive. Wear eye protection during installation and remove all jewellery. Do not lean over battery while making connections.

Line Hauler Accessories you will need *(not included)*

- Gloves – for handling rope.
- Rope – length according to your needs.
- Battery Cable – from plug to battery.
- Trap – type according to your needs.

MAINTENANCE

1. Periodically remove all dirt or corrosion and always keep clean and dry.
2. Do not attempt to disassemble the gearbox.
3. The gearbox has been lubricated using a high temperature lithium grease and is sealed at the factory. No internal lubrication is required.

TROUBLESHOOTING

| SYMPTOM | POSSIBLE CAUSES | CORRECTIVE ACTION |
|--|---|---|
| Motor does not turn on. | 1. Switch assembly not connected properly. | 1. Check switch assembly all the way into the connector. |
| | 2. Loose battery cable connections. | 2. Tighten all cables and connectors. |
| | 3. Defective switch assembly. | 3. Replace switch assembly. |
| | 4. Defective motor. | 4. Check for voltage on motor terminals with the switch in the ON position. If there is power the motor needs servicing. |
| | 5. Water has entered motor. | 5. Allow to drain and dry. Run in short bursts without load until completely dry. |
| | 6. Faulty Solenoid. | 6. If there is power going to the solenoid but not to the motor, replace solenoid. |
| Motor runs but the large wheel does not turn. | Bonder on the bearing may be missing or broken. | • Add or replace it. |
| Motor runs slowly or without normal power. | Insufficient current or voltage. | • Check battery is fully charged. • Loose or corroded battery cable connections. Clean, tighten or replace. |
| Motor over-heating. | Running time is too long. | • Allow to cool down periodically. |
| Motor running but suddenly stops. | Overloaded. | • Remove some load, start motor after 15-20 seconds. • Check solenoid. |

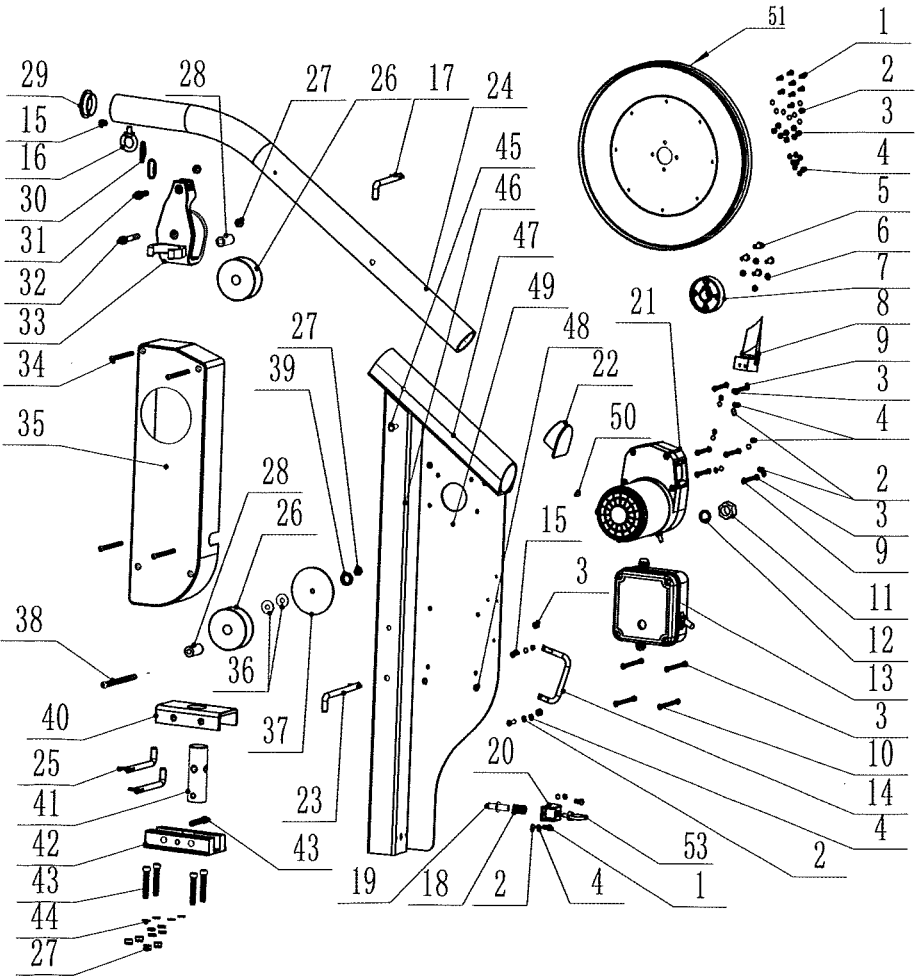
PARTS

If ordering a part, provide the product model as well as the part number.

| PART # | PART DESCRIPTION |
|---------------|-------------------------|
| 1 | M5x15 |
| 2 | Washer M5 |
| 3 | Nut M5 |
| 4 | Spring washer M5 |
| 5 | M6x16 |
| 6 | Spring Washer M6 |
| 7 | Adapter |
| 8 | Rope fairlead |
| 9 | M5x50 |
| 10 | M5x70 |
| 11 | Nut M18 |
| 12 | Spring Washer M18 |
| 13 | Switch box |
| 14 | Handle |
| 15 | M5x20 |
| 16 | Eye bolt M6x15 |
| 17 | Locking pin Dia 10x70 |
| 18 | Spring Dia 15x30 |
| 19 | Pin Dia 18x44.5 |
| 20 | Nylon base |
| 21 | Motor |
| 22 | Cap for frame |
| 23 | Locking pin Dia 10x140 |
| 24 | Arm |
| 25 | Locking pin Dia 10x90 |
| 26 | Nylon wheel |
| 27 | Nut M8 |

| PART # | PART DESCRIPTION |
|---------------|---------------------------------|
| 28 | Bearing Dia 16x38 |
| 29 | Cap for arm |
| 30 | Safety shackle M5 |
| 31 | M8x25 |
| 32 | M8x55 |
| 33 | Swivel Pulley |
| 34 | M6x85 |
| 35 | Nylon motor cover |
| 36 | Washer Dia 24x1.8 |
| 37 | Alu plate |
| 38 | M10x120 |
| 39 | Washer Dia 24x5 |
| 40 | Mounting plate cover |
| 41 | Bearing |
| 42 | Mounting plate |
| 43 | M8x50 |
| 44 | Washer Dia 15x1.6 |
| 45 | Hanging pole |
| 46 | Main frame |
| 47 | Round pipe |
| 48 | Alu nut M6 |
| 49 | Mounting plate for Motor |
| 50 | Pin for motor bearing |
| 51 | Main wheel |
| 52 | Power plug + Socket (not shown) |
| 53 | Spring Locking Pin |

PARTS



SPECIFICATIONS

200LB

| | |
|--------------------------------------|---------------------------|
| MOTOR: PERMANENT MAGNET (MAX) | 12V - 600Watt |
| GEAR RATIO | 53.9:1 |
| MAX SPEED | 46m/min |
| CURRENT/CABLE | 70.0-120A Ø6mmØ X 1.8M |
| MOUNTING BOLT | M8x50mm |
| NET WEIGHT | 13Kg |

300LB

| | |
|--------------------------------------|---------------------------|
| MOTOR: PERMANENT MAGNET (MAX) | 12V - 900Watt |
| GEAR RATIO | 64:1 |
| MAX SPEED | 44m/min |
| CURRENT/CABLE | 7.0-160A Ø10mmØ X 1.8M |
| MOUNTING BOLT | M8x50mm |
| NET WEIGHT | 14.5Kg |



info@elementwholesale.com.au